



# Introducing the NEW QL-400XT

The 1<sup>st</sup> *Intelligent, Intuitive, and Instructional* Semi-Automatic Stretch Wrapper.

**Work Smarter ... Keep Your Driver on the Forklift**

## Patented XT Cut and Clamp®

*Automatically captures the stretch film and cuts it at the end of the wrap cycle.*

- **Fully Mechanical**  
Requires no air or hot wire.
- **Save two minutes per load**  
Keep your driver on the forklift and eliminate the on and off to cut and attach film.



PROTECTED BY  
**Load Guardian™**  
*Creates, Maintains & Delivers  
Safe-to-Ship Loads*

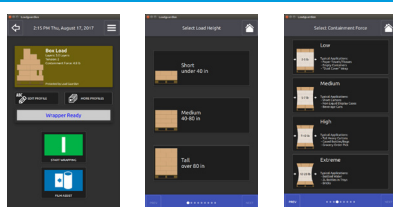


QL-400XT

**Load Guardian™** is Lantech's patented control system that *creates, maintains and delivers* the right containment force for safe-to-ship loads every time. It minimizes operator interaction and eliminates the guess work for stretch wrapping any load configuration.



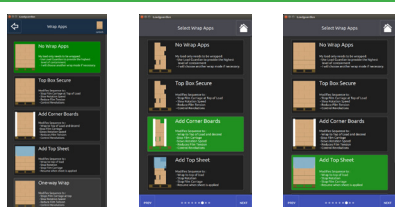
## Intelligent Set-up



Intuitively guides users through the profile creation process, using recognizable icons and smartphone-like simplicity, to calculate the right containment force.



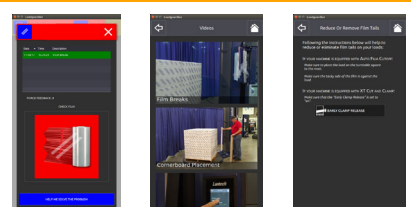
## Wrap Apps



Eliminates the need for operators to make machine adjustments for common load applications (e.g. corner boards, top sheet, top box, short loads) through pre-established, yet customizable wrap profile settings.



## Help



Provides simple video and text instruction for countering stretch wrapping problems: film breaks, product crushing, loads twisting, and more.



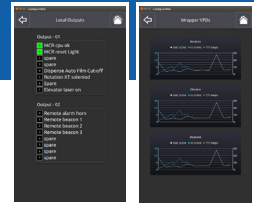
## Robustness

Hundreds of machine improvements based on 25 years of Q machine warranty experience. Wire connections, motors, reducers, and sensors are improved. Plus new controls.



## Machine Care

Simple diagnostics and fault tracking that make problem areas visible.



## Specifications

### Performance

Peak Production Speed	Up to 30-40 loads/hr
Turntable Speed (Variable)	12 RPM
Turntable Drive	1 HP TEFC

### Load Handling

Turntable Size	65" Diameter
Maximum Load Diagonal / Dimensions	69" recommended*
Maximum Load Height	80"
Maximum Load Weight	5000 lbs.

### Film Delivery System

Film Delivery System	Power Roller-Stretch PLUS
Standard Pre-Stretch	250%
E-Z Thread Roll Carriage	Standard
Wrapping Force	Variable (Electric)
Film Capacity	10" Roll Diameter
Standard Film Width	20"
Laser Height Sensor	Standard
Auto Film Cut-off	Standard
Pallet Grip®	Standard

### Service Requirements

Electric	120VAC, 20A
Pneumatic	N/A
NEMA Type 1 Enclosure	Standard
Wrap Cycle Pause	Standard
One Way Wrap	Standard
Service Support	24 Hrs/7 Days a week
Phone Number	800-866-0322
Warranty	5 years, unlimited cycles

## QL-400XT Standard Performance Package

- **Pallet Grip®**  
*Keeps your loads from sliding off pallets during shipment.*
- **Patented XT Cut and Clamp®**  
*Automatically captures the stretch film and cuts it at the end of the wrap cycle.*
- **Power Roller Stretch Plus™**  
*Maximizes film delivery system performance.*
- **NEMA Type 1 Enclosure**  
*Protects control system electronics from dust, dirt and moisture.*
- **5,000 lb Weight Capacity and 1 HP Turntable Drive Motor.**
- **No Scheduled Preventative Maintenance.**

## Options

### EZ Weigh® Integrated Scale

*Weigh and Wrap in One Easy Step!*



## Upgrade

### Click-n-Go™

*Stretch wrapping loads at the touch of a button!*

Eliminates requirement to install a ceiling-mounted lanyard.

Each unit can handle up to 3 machines with 5 load profiles per machine.

