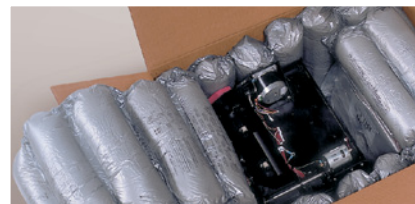


 **Sealed Air**

SpeedyPacker Insight[®]

Foam-In-Bag Packaging Systems

Custom Cushioning AT THE TOUCH OF A BUTTON



Sealed Air Sustainability

Instapak[®] foam expands on-site, reducing freight energy. Material can be returned to any Sealed Air facility for recycling.

Cushioning Solutions

A new world of packaging speed and versatility.

For high-volume packaging applications, nothing measures up better than our patented SpeedyPacker Insight® system. Versatile and efficient, you can dedicate a system to one packaging line or serve multiple lines.

With a simple touch, the SpeedyPacker Insight® system can produce up to 21 Instapak® foam-filled cushions per minute, increasing the productivity of your operation.

With an expansion rate of up to 280 times its liquid volume, Instapak® foam delivers significant savings in storage space and material handling costs compared to traditional packaging materials.

The SpeedyPacker Insight® system delivers cost-effective, superior product protection and presents your product to your customers in an attractive, damage-free package.

Maximize efficiency, minimize waste, with a simple touch.

Our new touch screen display lets the operator select optimum bag size and foam combinations to provide fast, secure protection for a wide variety of items. Label and preset up to 156 cushion combinations. The new display uses icons in place of words making it easy-to-use with minimal training. Video demonstrations also add to the ease of operator training.



Touch Screen Display
Full-color, user-friendly control panel.

19" Benchtop Model
A convenient stand-alone workstation. System pictured with optional workstation.



METHODS



Wet Bags

For high speed, custom-fit cushioning or heavy-duty blocking and bracing applications, nothing protects products better than Instapak® foam-in-bag packaging.



CFTs

Flexible Continuous Foam Tubes (CFTs) can be used to provide a base cushion or full wrap around. Insert blank film spaces between tubes to provide Instapak® protection only where needed.



Hybrid

Combine foam-filled bags and Continuous Foam Tubes (CFTs) to create cushions for your most demanding packaging assignments.

Molding Solutions

Combine the speed of a foam-in-bag system with the protective properties of an engineered packaging solution.

When combined with one of our Instapak® molding systems, the SpeedyPacker Insight® system can instantly produce a custom-shaped cushion that provides exact product positioning and engineered package performance.

The SpeedyPacker Insight® Foam-In-Bag Molding Process



- 1 With a simple touch, the SpeedyPacker Insight® system quickly dispenses an Instapak® foam-filled bag.



- 2 When placed into the mold enclosure, the bag is drawn in by an on-board vacuum.



- 3 After the cushion has fully expanded, it is removed with the help of a built-in air ejection system.



- 4 Custom-shaped cushions provide cost-effective, consistent protection.

19" Floor Model with Instapak® Molding Wheel
Produce custom-shaped molded cushions on demand.
Instapak® Molding Wheel sold separately.



Void Fill Solutions

The SpeedyPacker Insight® system provides a fast, economical solution for your on-line void fill applications.

Perfect for busy “pick and pack” operations and distribution centers. Since Instapak® foam expands up to 280 times its liquid volume, the SpeedyPacker Insight® system frees up valuable warehouse space. The equivalent of a trailer load of packaging materials can be stored in two 55-gallon drums.



HIGH-VOLUME OPS



19" Floor Model

This height-adjustable system is ideal for high-volume “pick and pack” operations and distribution centers.

Simple, Fast and Cost-Effective

Excellent product presentation, versatility, space savings and the protection your products require

The SpeedyPacker Insight® system can be set to batch-produce and accumulate foam tube packs for later use or for delivery to multiple workstations.

Continuous Foam Tube (CFT) Process



1 With a simple touch, the SpeedyPacker Insight® system quickly dispenses Instapak® foam-filled tubes.



2 Insert spaces between tubes to provide protection where needed.



3 A series of Continuous Foam Tubes (CFTs) can be used as a protective cushioning base.



4 The versatile CFTs can be used for end caps or corner and edge protection.



Foam-in-Bag Process



1 With a simple touch, the operator selects the proper bag length and amount of Instapak® foam.



2 The operator places the foam-filled bag into the carton and nestles the product onto the expanding cushion.



3 A second foam-filled bag is placed on top of the product, and the carton flaps are closed.



4 The foam-filled bag expands around the product to form a top cushion.

SpeedyPacker Insight[®]

System Options



19-Inch Benchtop Model

Shown with optional workstation

Machine Size

Benchtop: 52" wide × 30" deep × 47" high

Floor: 52" wide × 38" deep × 79" to 103" high

Film Size

12" and 19" widths available

Production Rate

(21) 12" bags per minute, 50% foam-filled



19-Inch Floor Model

Electrical

200 — 240 VAC ~ Single-Phase

30 Amp

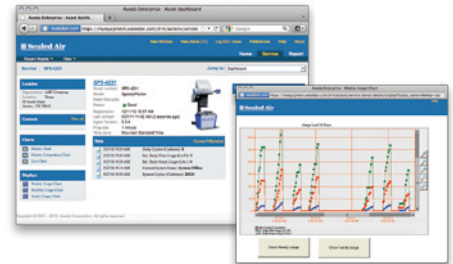
Receptacle Type

NEMA L6-30R

Certifications

UL and CE Approved

Instapak[®] Connect[™] Remote Asset Management



Sealed Air has enhanced its world-class customer service by equipping qualifying Instapak[®] systems with remote asset management capabilities. The Instapak[®] Connect[™] enhancement provides Sealed Air with crucial diagnostic information in real time, which will help prevent costly downtime to your operation.

Systems may be equipped with an electronic communication device which allows Sealed Air to obtain information about equipment operation for the purpose of improving performance.

SmartLife[™] Approach

Our SmartLife[™] multifaceted approach is to raise awareness about sustainable packaging and to advance Sealed Air's sustainable mission within the Company's larger business strategy. Sealed Air is committed to helping its stakeholders understand the environmental benefits and impacts of packaging solutions.

Our SmartLife[™] approach, in conjunction with Sealed Air's values — lead, trust, respect and integrity — provides the foundation upon which the company's business is conducted.



Distributed By:



Protective Packaging
10 Old Sherman Turnpike
Danbury, CT 06810
203-791-3500 Fax: 203-791-3618
www.speedypacker.com

Our Products Protect Your Products[®]

Corporate Office: Sealed Air Corporation (US)
200 Riverfront Boulevard, Elmwood Park, NJ 07407 www.sealedair.com
© Reg. U.S. Pat. and TM Off. © Sealed Air Corporation (US) 2012. All rights reserved.
The "9 Dot Logo" and "Sealed Air" are registered trademarks of Sealed Air Corporation (US).
Printed in the U.S.A. D-89 11/12