

SYNERGY 3

Semi-Automatic Stretch Wrap System

The Synergy 3 is the most versatile, flexible, and reliable stretch wrap system in the industry! Dual Power Hydro-Stretch™ has the versatility to adapt to any stretch film and deliver the maximum performance from that film. The flexibility of five wrapping patterns will unitize any load most efficiently. The reliability of the highest quality industrial components assures efficient operation and long life.

Built for the future, state-of-the-art controls are easy to use and offer flexibility with 5 built-in wrapping patterns, ensuring the lowest unitizing costs. Highlight's heavy duty design plus the highest quality components assure years of trouble-free operation.

For the greatest film savings!



High Profile shown
Low Profile available

HIGHLIGHTS

- » Dual Power Hydro Stretch™ delivers maximum film performance and savings
- » Durable design and all-steel construction make for long lasting and reliable use
- » Multiple wrapping patterns allow for flexibility and efficiency with any load

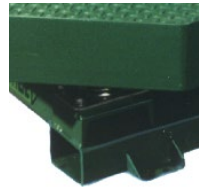


PREMIUM FEATURES



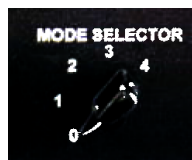
Dual Power Hydro-Stretch™

A feature exclusive to Highlight Industries, provides two independent levels of pre-stretch: one for the bottom of the load, the other for the rest of the load. Dual Power Hydro-Stretch™ allows you to set the two levels separately for differences in your pallet and load profile, and bring the film to its optimum level.



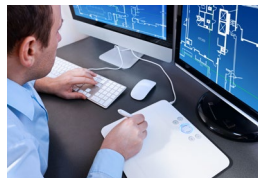
Heavy Duty

All-steel construction and *over-engineered* design make the Synergy 3 durable and reliable for decades of use.



Wrapping Patterns

Multiple wrapping patterns allow the flexibility to wrap any type of load correctly, and reduce product damage while shipping.



Custom Design

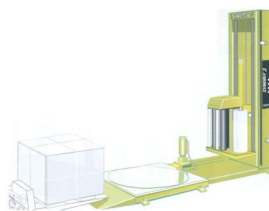
Highlight will customize your machine using a wide range of options available, giving you the features you need to optimize production.

CONTROL PANEL FEATURES

- Cycle Counter
- Top & Bottom Wrap Counters
- Table Home
- Carriage Speed Up
- Carriage Speed Down
- Carriage Auto/Banding
- Carriage Raise/Lower
- Film Force
- Film Assist
- Mode Selector

SYSTEM SPECIFICATIONS

Dual Power Hydro-Stretch™	Fully Adjustable up to 500% Stretch	Operating Controls	Allen-Bradley MicroLogix 1200 PLC
Turntable	High Profile 48"x48" Octagonal, 12 RPM Low Profile 57" Diameter, 12 PM	Turntable Drive Motor	3/4 HP AC
Wrap Height	High Profile Up to 72" Low Profile Up to 80"	Carriage Lift Motor	3/4 HP AC
Film Capacity	10" Diameter, 10"-20" Roll Width	Electrical Requirements	120 Volts, 20 Amp
Standard Capacity	High Profile 4,000 Pounds Low Profile 5,000 Pounds	Machine Weight	High Profile 1,500 Pounds Low Profile 2,100 Pounds



High or Low Profile

Highlight will build the correct system for your application. The Synergy 3 is available in either High or Low Profile. The High Profile can be easily loaded with a fork lift. The Low Profile can use an optional ramp for loading with hand pallet jacks.

Contact:

HIGHLIGHT
INDUSTRIES, INC.

2694 Prairie SW
Wyoming, Michigan 49519
800-531-2465